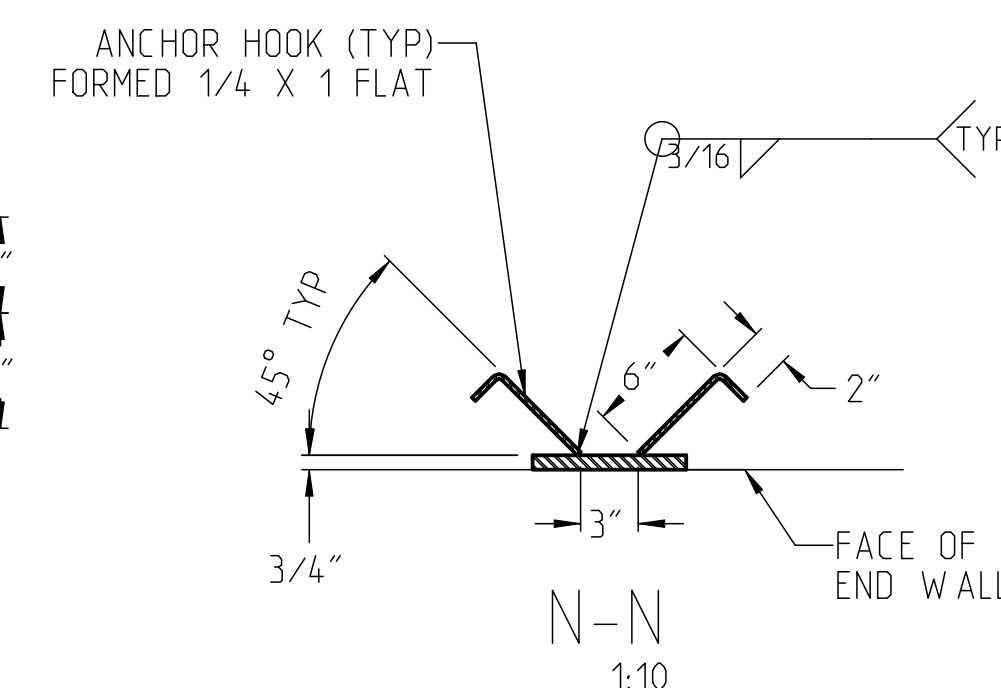
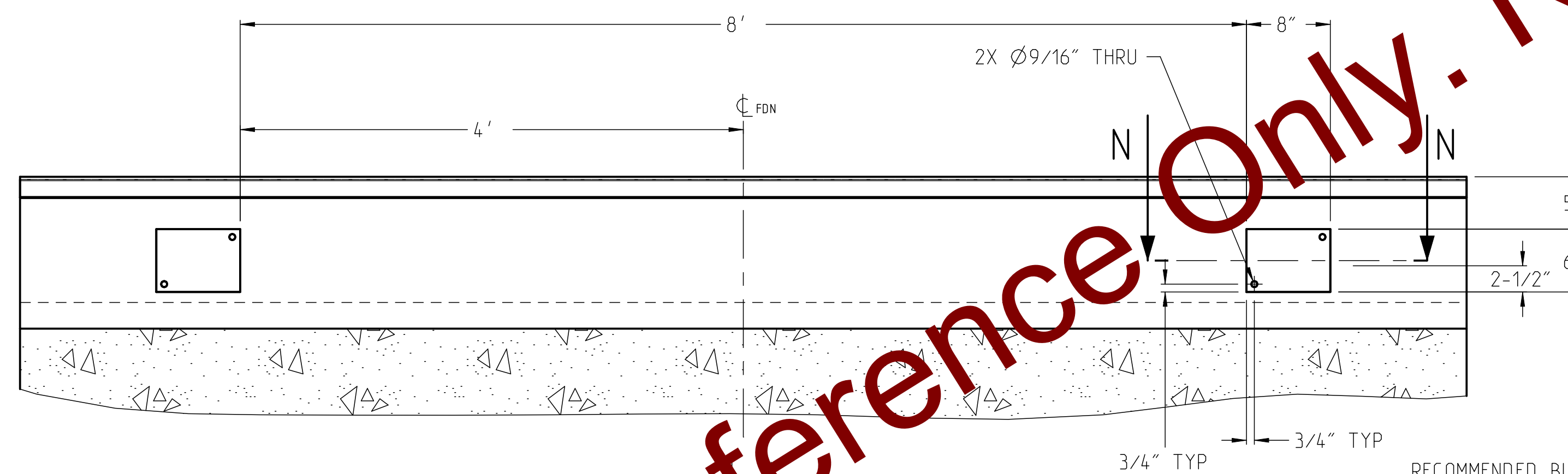
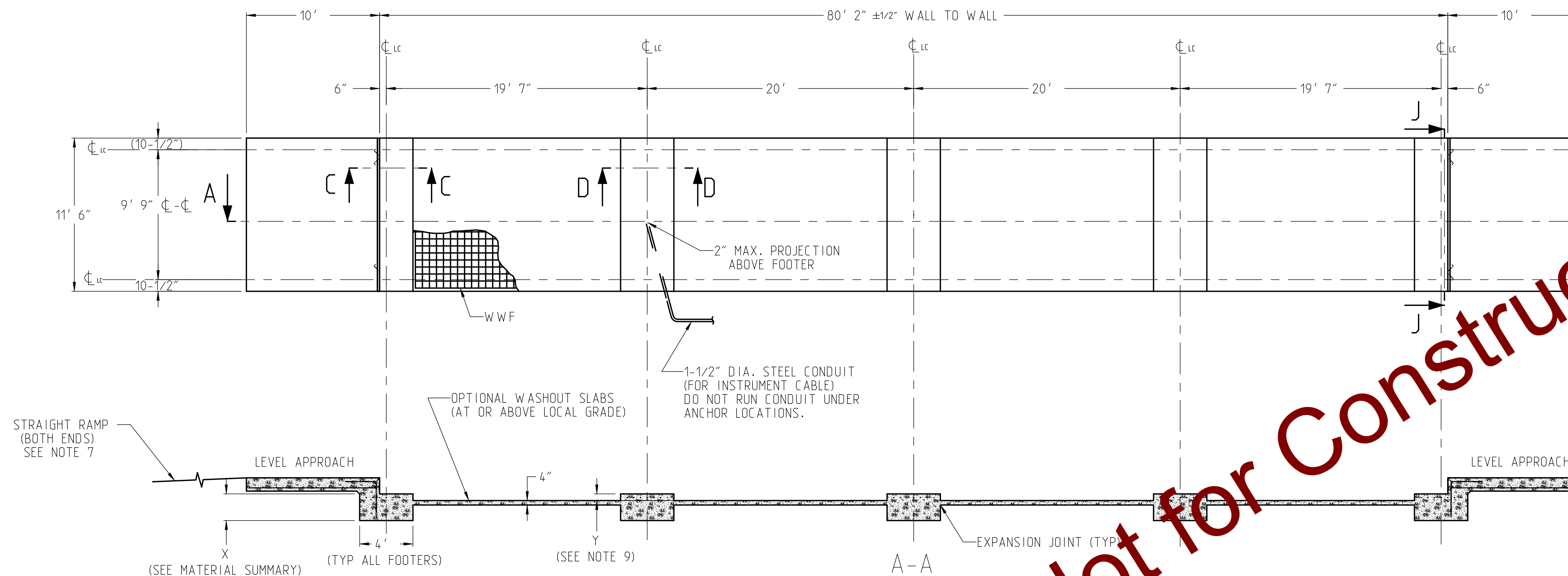


	L1-B	WGT
NO RISERS	32"	125
3" RISERS	35"	131
6" RISERS	38"	138

				TOTAL WEIGHT:			1194
5	24	L1	#5	APPROACH TO END TIES	28.00	32.00	125
4	24	ST3	#5	APPROACHES, LONG.	114.00		238
3	20	ST2	#5	APPROACHES, LATERAL	132.00		230
2	2	ST2	#5	ENDS, LATERAL	132.00		23
1	35	ST1	#6	FOOTERS, LATERAL	132.00		579
ITEM	QTY	SYM	SIZE	DESCRIPTION	A	B	WEIGHT

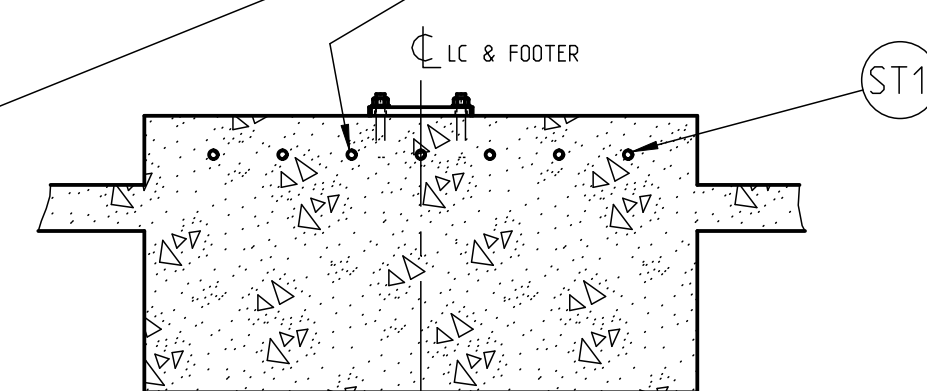
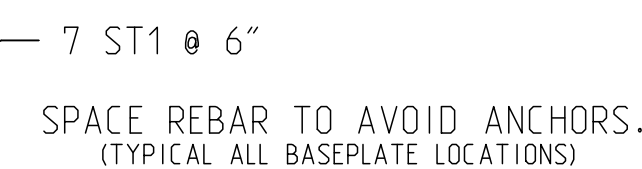
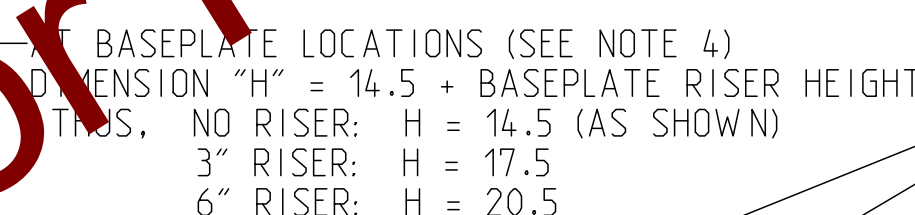
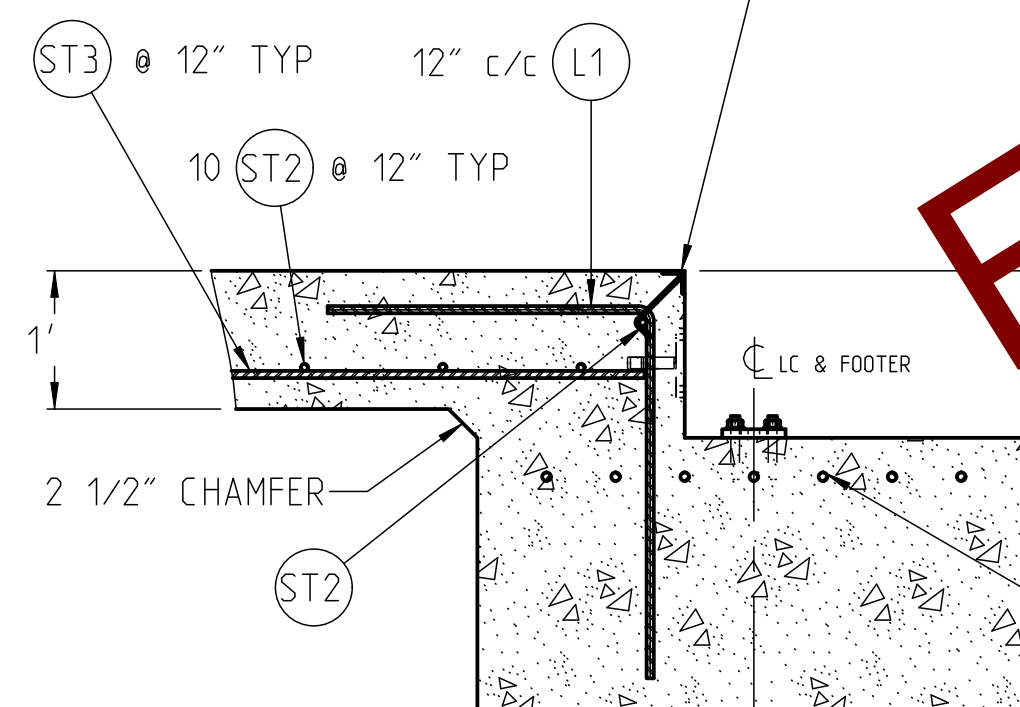


<b>MATERIAL SUMMARY*</b> (INCLUDES FOOTERS & APPROACHES) (DOES NOT INCLUDE SCALE DECK)	FOOTER DEPTH: "X" INCHES (24 INCH MINIMUM)				
	24	36	48	60	72
CONCRETE (CU. YDS)	25.8	34.4	42.9	51.4	59.


\*IF OPTIONAL WASHHOUT SLABS ARE USED, ADD:  
726 SQ. FT. OF WWF: 6X6\_W 1.4XW 1.4  
9.0 CU. YD. OF CONCRETE

- NOTES:

- 1) FOUNDATION REQUIRES MINIMUM 3000 PSI STRENGTH CONCRETE AT 28 DAYS WITH 5-7% AIR ENTRAINMENT. SPECIFICATIONS FOR SCALE DECK CONCRETE ARE FOUND ON CORRESPONDING GENERAL LAYOUT DRAWING.
- 2) USE MINIMUM 60KSI YIELD DEFORMED REINFORCING STEEL. REBAR MINIMUM DEPTH OF COVER SHOULD BE IN ACCORDANCE WITH THE LATEST ACI BUILDING CODE REQUIREMENTS FOR STRUCTURAL CONCRETE (ACI 318-SECTION 7.7) UNLESS OTHERWISE SPECIFIED.
- 3) FOUNDATION REQUIRES 2500 PSF RATED SOIL FOR HIGHWAY TRUCK APPLICATIONS.
- 4) TOP OF CONCRETE AT BASEPLATE LOCATIONS TO BE LEVEL AND IN ONE PLANE  $\pm 1/8"$
- 5) DIAGONAL MEASUREMENTS ENDWALL TO ENDWALL MUST BE EQUAL WITHIN  $1/2"$ .
- 6) BASEPLATE ANCHORS TO BE SUPPLIED BY METTLER-TOLEDO. USE BASEPLATES AS TEMPLATES TO LOCATE ANCHORS DURING SCALE INSTALLATION.
- 7) RAMP LENGTH: -PER LOCAL REGULATIONS  
- $1/2"$  SLOPE PER FOOT TYPICAL
- 8) BOTTOM OF FOOTER MUST BE BELOW LOCAL FROSTLINE.
- 9) FOOTER HEIGHT "Y" CAN BE VARIED TO SUIT LOCAL CLEARANCE REQUIREMENTS.  
TOP OF FOOTER AT GRADE LEVEL, i.e. FLUSH WITH WASHOUT SLABS, PROVIDES STANDARD 4" CLEARANCE BETWEEN BOTTOM OF WEIGHBRIDGE AND WASHOUT SLABS.
- 10) OPTIONAL: 6" OF GRAVEL MAY BE USED UNDER APPROACHES TO IMPROVE DRAINAGE.
- 11) CONTRACTOR SUPPLIES:
  - EXCAVATION
  - REINFORCING STEEL
  - CURB ANGLE ASSEMBLIES (SECT C-C)
  - CONCRETE AND FORMS
  - 1 1/2" DIA CONDUIT
  - BUMPER PLATE ASSEMBLIES (VIEWS J-J & N-N)



REV	ZONE	DESCRIPTION	BY	APPVD	AGENCY	E.R. NO.	DATE	
CHG		RECORD OF CHANGES						

<b>METTLER TOLEDO</b>		MTMS US-43229 Columbus OH		Drawn -	Draper, Craig	31-Jan-2020	Scale -	160	
Refer to protection notice ISO 16016 / Schutzvermerk ISO 16016 beachten				Note	-	Format -	ANSI D	Replaces -	
Description <b>VTC25X FDN VF 80X11 W/RSR</b>				No Rev	61809643		ERP No <b>not released</b>	ERP	
Model: D000433246 Rev: A		Drawing: D000433246 Rev: A		Status:		Units: INCH		1	